



UTAH SYSTEM OF
HIGHER EDUCATION

MEMORANDUM

February 17, 2023

Overview: Social Determinants of Student Success

Overview: Social Determinants of Health

In 2008, the World Health Organization (WHO) published a framework called the “[social determinants of health](#),” which details how the conditions in an individual’s environment affect their health, functioning, and quality of life. The five social determinants of health are:

1. Education access and quality
2. Economic stability
3. Social and community context
4. Neighborhood and built environment
5. Healthcare access and quality

Social Determinants of Student Success

The Colorado Department of Higher Education was the first to use the term “[social determinants of student success](#),” which considers the social determinants of health framework through a lens of student success. After all, “[while approximately 35% of students who leave an institution, part for academic reasons, the other 65% leave voluntarily for non-academic reasons](#).”

Commissioner’s Recommendation

This is an information item only; no action is required.

Attachment



SOCIAL DETERMINANTS OF STUDENT SUCCESS (SDOSS)

October 21, 2022



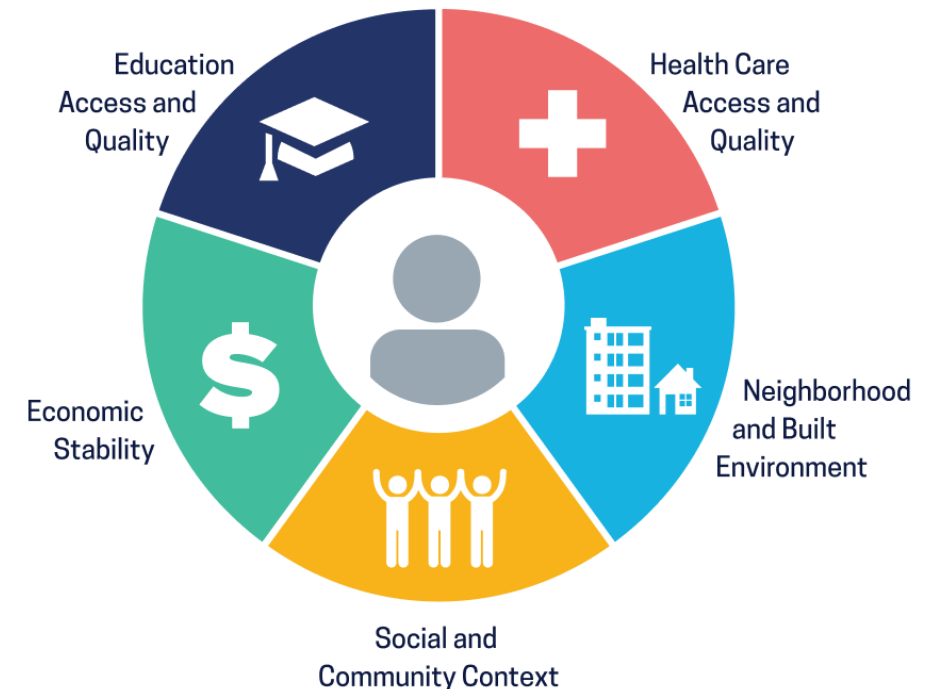
UTAH
SYSTEM OF
HIGHER
EDUCATION

Framework

Social Determinants of Health (SDOH)

SDOH are the conditions in the environments where people live that affect, for better or worse, their health, functioning, and quality of life

Social Determinants of Health



What helps people succeed? (SDOH)

ECONOMIC STABILITY

- Stable employment
- Adequate wages
- Reasonable costs

EDUCATION ACCESS & QUALITY

- Access to high-quality educational institutions

HEALTHCARE ACCESS & QUALITY

- Nutritious food
- Physical activity
- Physical health services
- Mental health services
- Health insurance

NEIGHBORHOOD & BUILT ENVIRONMENT

- Adequate, consistent housing
- Safety
- Technology
- Transportation
- Childcare

SOCIAL & COMMUNITY CONTEXT

- Sense of belonging

What helps students complete? (SDOSS)

ECONOMIC STABILITY

- Stable employment
- Adequate wages
- Reasonable costs

EDUCATION ACCESS & QUALITY

- Access to high-quality educational institutions

HEALTHCARE ACCESS & QUALITY

- Nutritious food
- Physical activity
- Physical health services
- Mental health services
- Health insurance

NEIGHBORHOOD & BUILT ENVIRONMENT

- Adequate, consistent housing
- Safety
- Technology
- Transportation
- Childcare

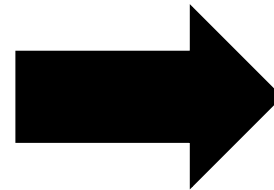
SOCIAL & COMMUNITY CONTEXT

- Sense of belonging

Impacts on Completion

HEALTHCARE ACCESS &
QUALITY

Nutritious food



1 in 4

US students have considered dropping out due to difficulty affording food

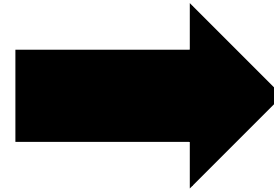
1 in 3

Know someone who has dropped out due to food insecurity

Impacts on Completion

HEALTHCARE ACCESS & QUALITY

Mental health services



The Healthy Minds Study reveals that across all types of campuses, students facing mental health challenges are

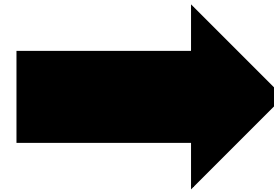
**twice as likely to
leave without
graduating**

even after accounting for prior
academic record and other
characteristics

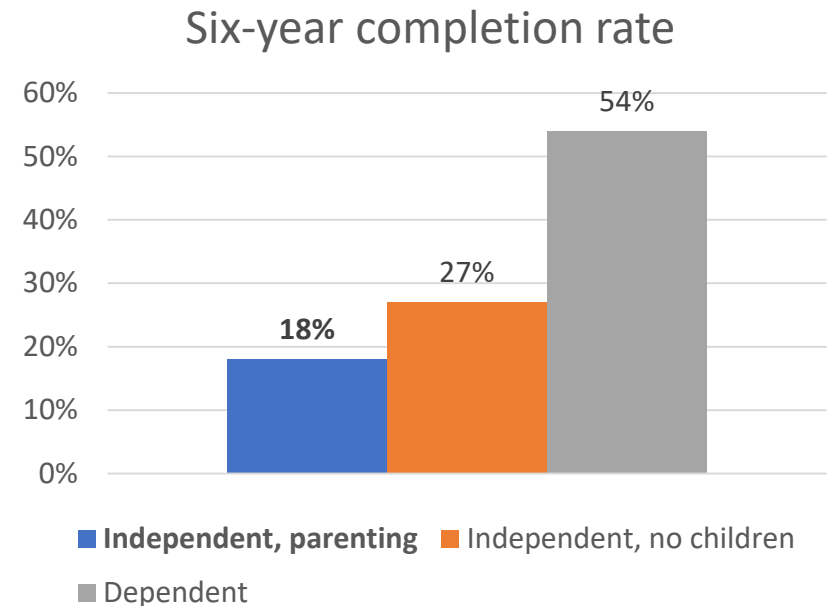
Impacts on Completion

NEIGHBORHOOD & BUILT ENVIRONMENT

Childcare



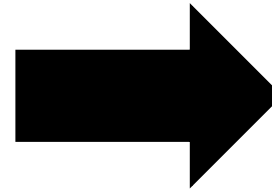
56% of parenting students miss at least one day of class per semester due to lack of childcare. 8% miss five or more days:



Impacts on Completion

SOCIAL & COMMUNITY CONTEXT

Sense of belonging



"Students who perceive themselves as belonging to a specific group or institution generally are more likely to persist because it leads not only to enhanced motivation but also a willingness to become involved with others in ways that further promote persistence."

“While approximately 35% of students [who leave a university] part for academic reasons, the other 65% leave a university voluntarily for non-academic reasons.”

Guests

On basic needs and completion:

**Sarah Elizabeth
Garza-Levitt**

*Associate Director of the Basic
Needs Collective -
University of Utah*

On mental health and completion:

Del Beatty

*Vice President of Student
Affairs -
Utah Tech University*

On belonging and completion:

Emma E. Houston

*Assistant Vice President for EDI
and Chief Diversity Officer –
University of Utah*

SDOSS and the Board

ECONOMIC STABILITY

SDOSS conditions

Stable employment
Adequate wages



Examples of how the Board's work helps facilitate those conditions



Workforce Alignment

Increase the completion rate of graduates in high-demand, high-wage programs

- Increase higher education participate rate of adults
- Increase student participation in work-based learning


Reasonable costs




Affordability

Increase student ability to pay the cost of attendance

- Increase FAFSA completion
- Evaluate and prioritize state student financial aid


Access

Increase the college-going rate of high school grads

- Support institutions in helping students secure their basic needs

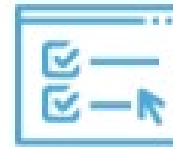
EDUCATION ACCESS & QUALITY

SDOSS conditions

Access to high-quality educational institutions



Examples of how the Board's work helps facilitate those conditions



Access

Increase the college-going rate of high school grads

- Simplify institutional admissions processes
- Ensure high school students are meaningfully informed on dual enrollment programming

HEALTHCARE ACCESS & QUALITY

SDOSS conditions

Nutritious food

Physical activity

Physical health services

Health insurance



Examples of how the Board's work helps facilitate those conditions



Access

Increase the college-going rate of high school grads

- Support institutions in helping students secure their basic needs
- *Deploy staff to case manage with students in need of institutional and external basic needs services*

Increase the timely completion of degrees and awards



Completion

- Ensure systemwide institutional supports for student mental health

Mental health services



NEIGHBORHOOD & BUILT ENVIRONMENT

SDOSS conditions

Adequate, consistent housing

Safety

Technology

Transportation

Childcare



Examples of how the Board's work helps facilitate those conditions



Access

Increase the college-going rate of high school grads

- Support institutions in helping students secure their basic needs
 - *Deploy staff to case manage with students in need of institutional and external basic needs services*



Completion

Increase the timely completion of degrees and awards

- Ensure systemwide institutional supports for campus safety

SOCIAL & COMMUNITY CONTEXT

SDOSS conditions

Sense of belonging



Examples of how the Board's work helps facilitates those conditions



- LGBTQ+ Resolution
- Juneteenth Resolution
- Positive Impact of Dreamers Resolution

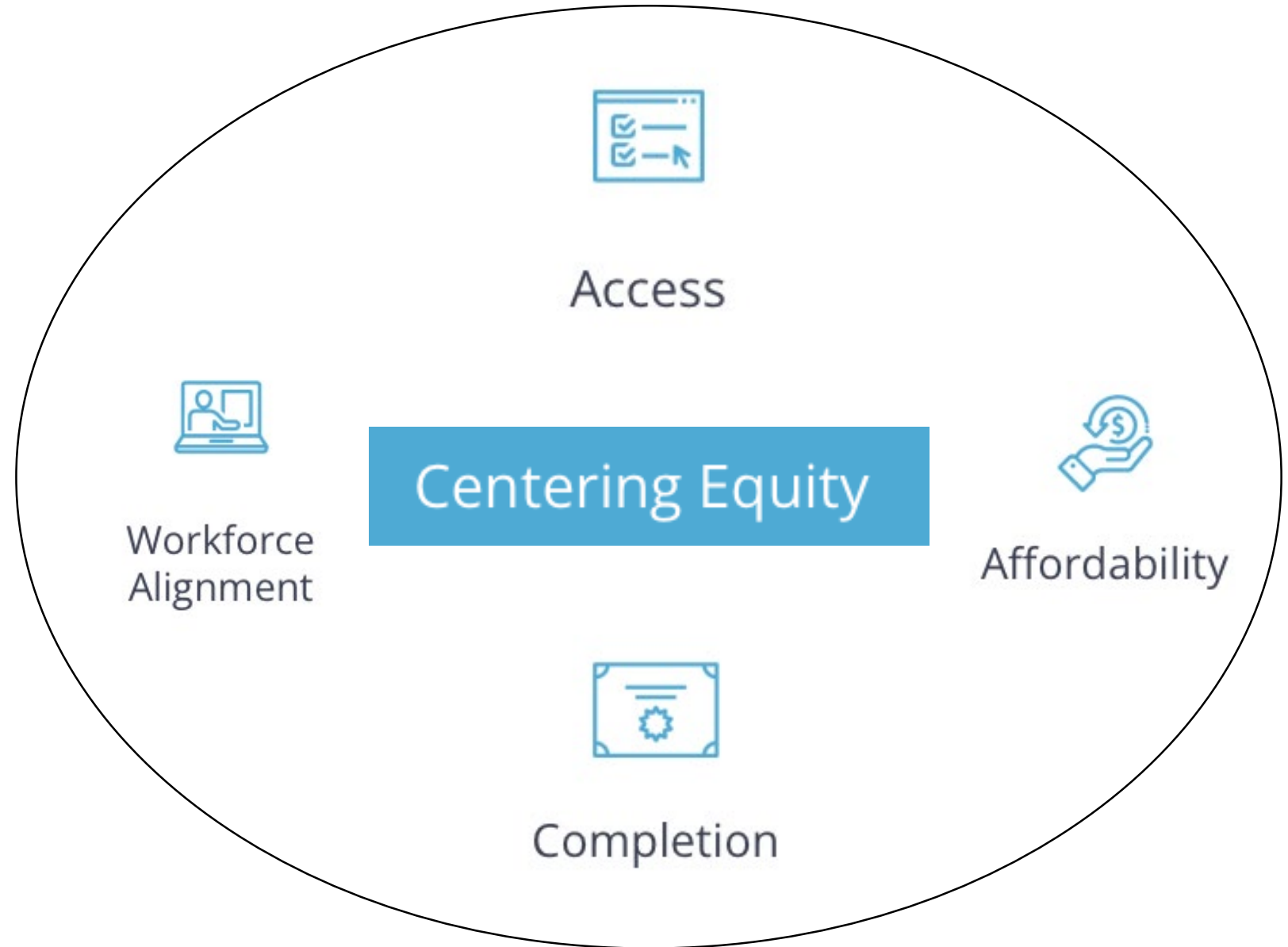
ECONOMIC STABILITY

EDUCATION ACES & QUALITY

HEALTHCARE ACCESS & QUALITY

NEIGHBORHOOD & BUILT ENVIRONMENT

SOCIAL & COMMUNITY CONTEXT



Call to action

- Please consider attending:
 - JED Summit (November 3)
 - Higher Education Food Summit (November 11)

Moving forward, how do we keep amplifying the conversation of completion through the lens of Social Determinants of Student Success?